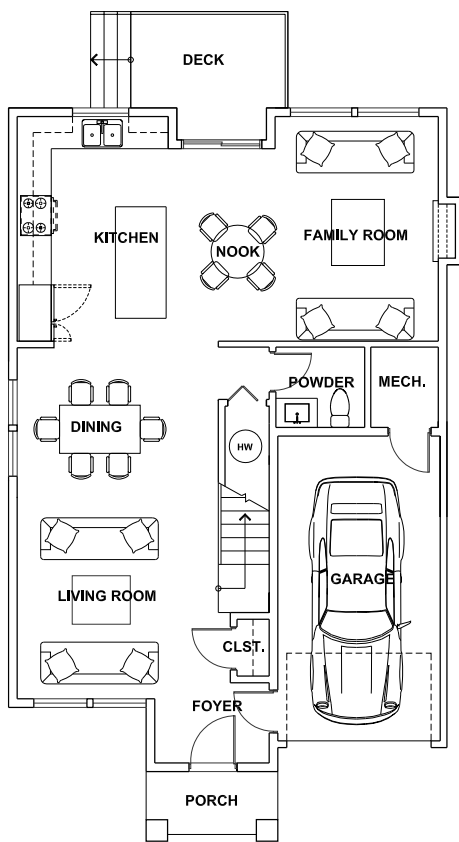


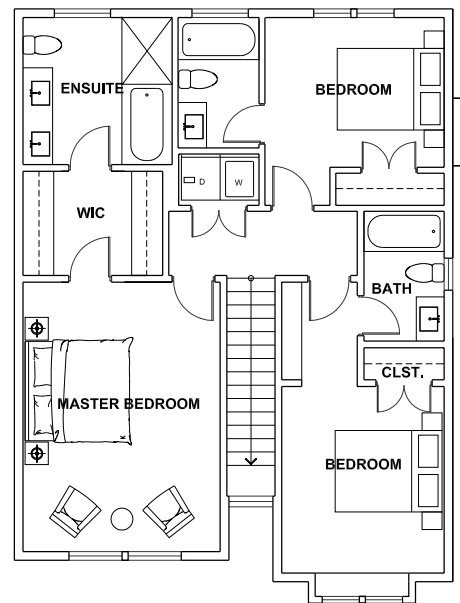


TYPE A (02A, 12A, 13A) | 3 BEDROOM

TOTAL AREA From 1779 to 1798 sq.ft.



**FIRST FLOOR**  
891 sq.ft.



**SECOND FLOOR**  
907 sq.ft.

The Developer reserves the right to make modifications to floor plans, project designs, specifications and features. Floor plans and final home sizes may vary. E. & O. E.

**460** REALTY

**TOM MUNRO**  
Personal Real Estate Corporation



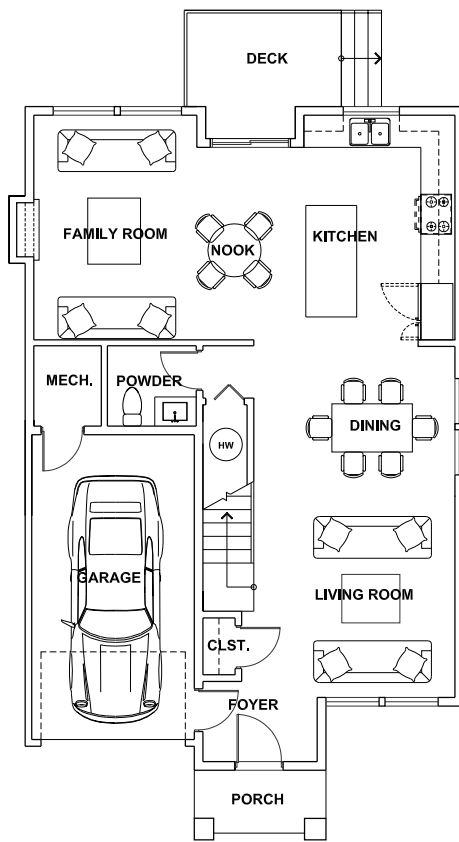
**250.714.2147**  
Email: Info@5160.ca

[www.5160.ca](http://www.5160.ca)

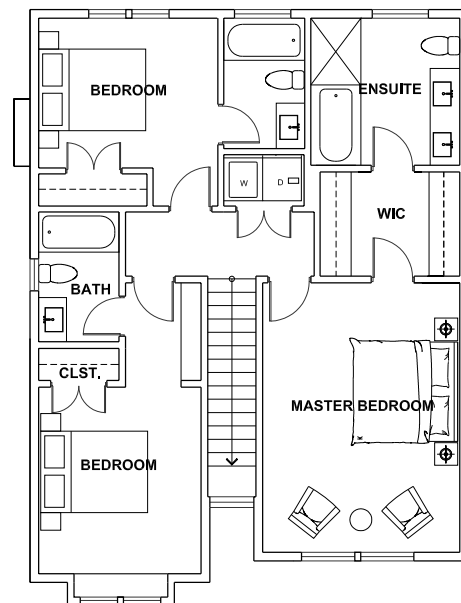


TYPE A (03A, 06A, 07A) | 3 BEDROOM

TOTAL AREA 1798 sq.ft.



**FIRST FLOOR**  
891 sq.ft.



**SECOND FLOOR**  
907 sq.ft.

The Developer reserves the right to make modifications to floor plans, project designs, specifications and features. Floor plans and final home sizes may vary. E. & O. E.

**460** REALTY

**TOM MUNRO**  
Personal Real Estate Corporation



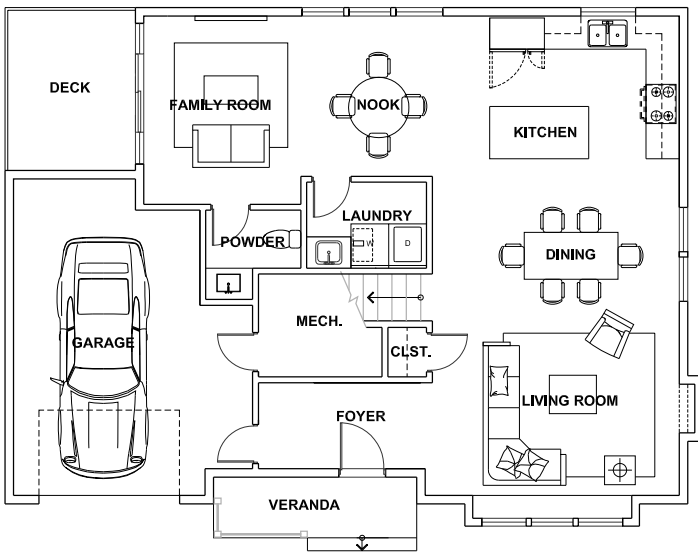
**250.714.2147**  
Email: Info@5160.ca

**www.5160.ca**

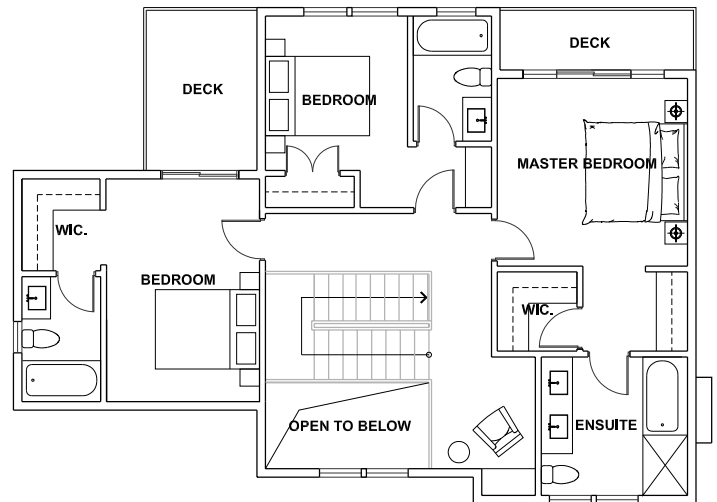


TYPE B (17B) | 3 BEDROOM

TOTAL AREA 2074 sq.ft.



**FIRST FLOOR**  
1022 sq.ft.



**SECOND FLOOR**  
1052 sq.ft.

The Developer reserves the right to make modifications to floor plans, project designs, specifications and features. Floor plans and final home sizes may vary. E. & O. E.

**460** REALTY

**TOM MUNRO**  
Personal Real Estate Corporation



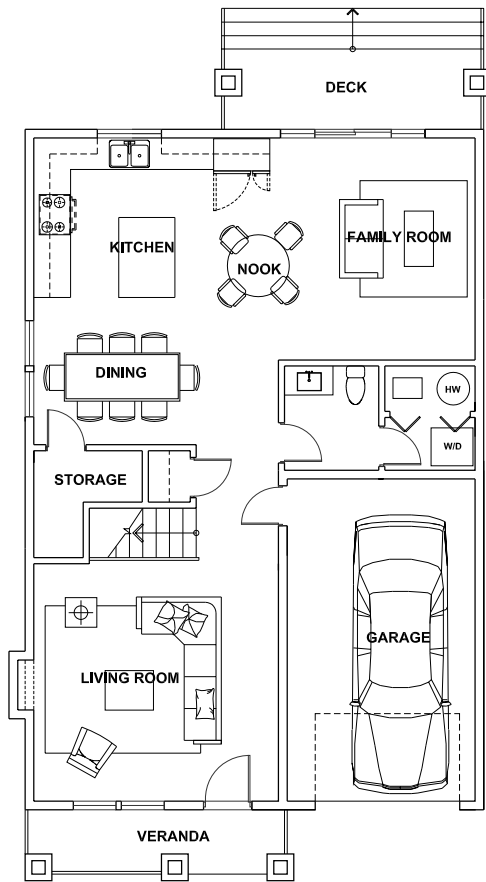
**250.714.2147**  
Email: Info@5160.ca

[www.5160.ca](http://www.5160.ca)

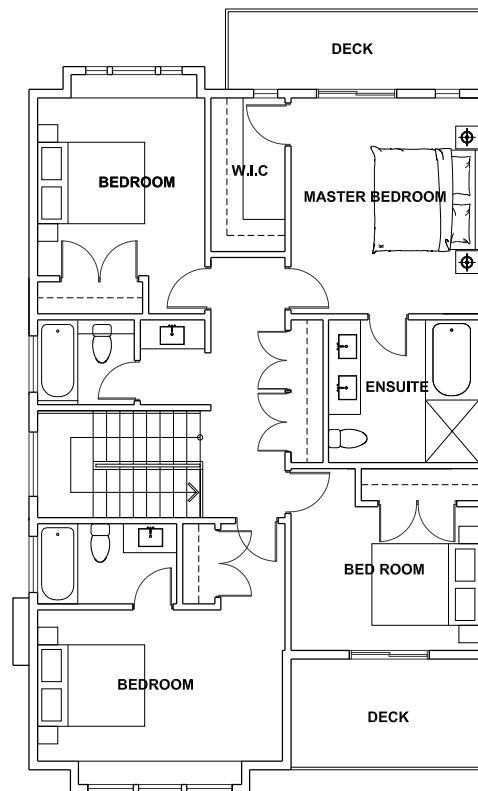


TYPE C (04C, 15C) | 4 BEDROOM

TOTAL AREA 2120 sq.ft.



**FIRST FLOOR**  
992 sq.ft.



**SECOND FLOOR**  
1128 sq.ft.

The Developer reserves the right to make modifications to floor plans, project designs, specifications and features. Floor plans and final home sizes may vary. E. & O. E.

**460** REALTY

**TOM MUNRO**  
Personal Real Estate Corporation



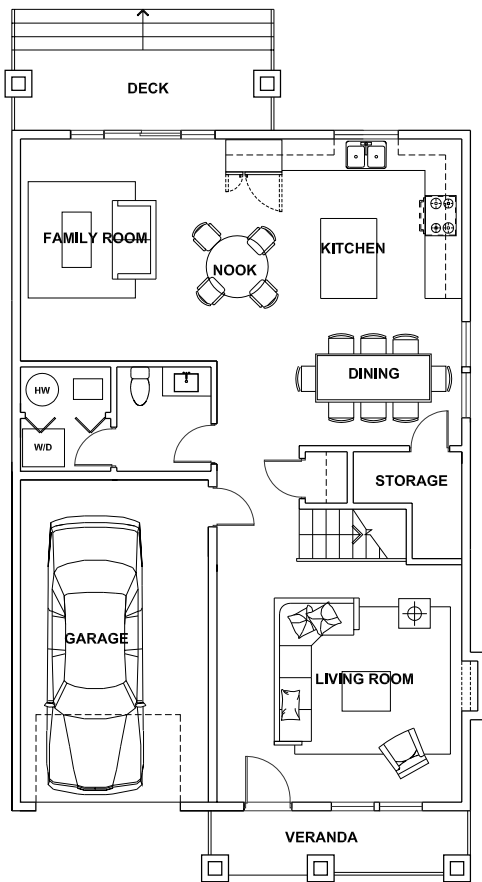
**250.714.2147**  
Email: Info@5160.ca

[www.5160.ca](http://www.5160.ca)

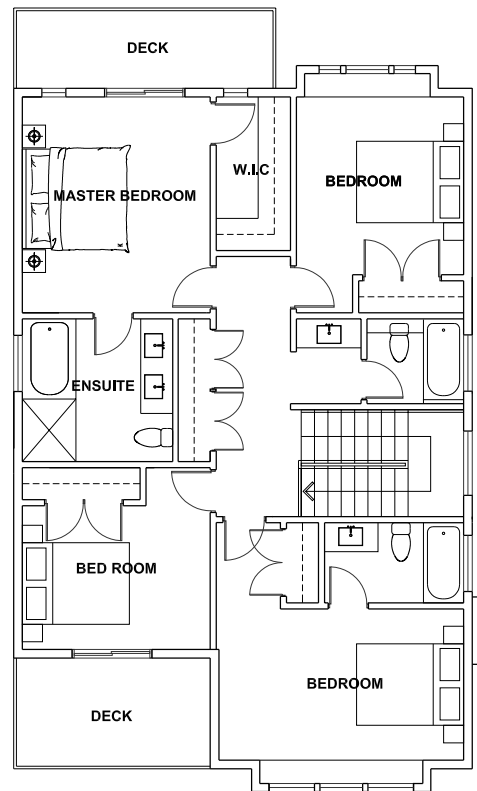


TYPE C (05C, 14C, 16C) | 4 BEDROOM

TOTAL AREA 2120 sq.ft.



**FIRST FLOOR**  
992 sq.ft.



**SECOND FLOOR**  
1128 sq.ft.

The Developer reserves the right to make modifications to floor plans, project designs, specifications and features. Floor plans and final home sizes may vary. E. & O. E.

**460** REALTY

**TOM MUNRO**  
Personal Real Estate Corporation



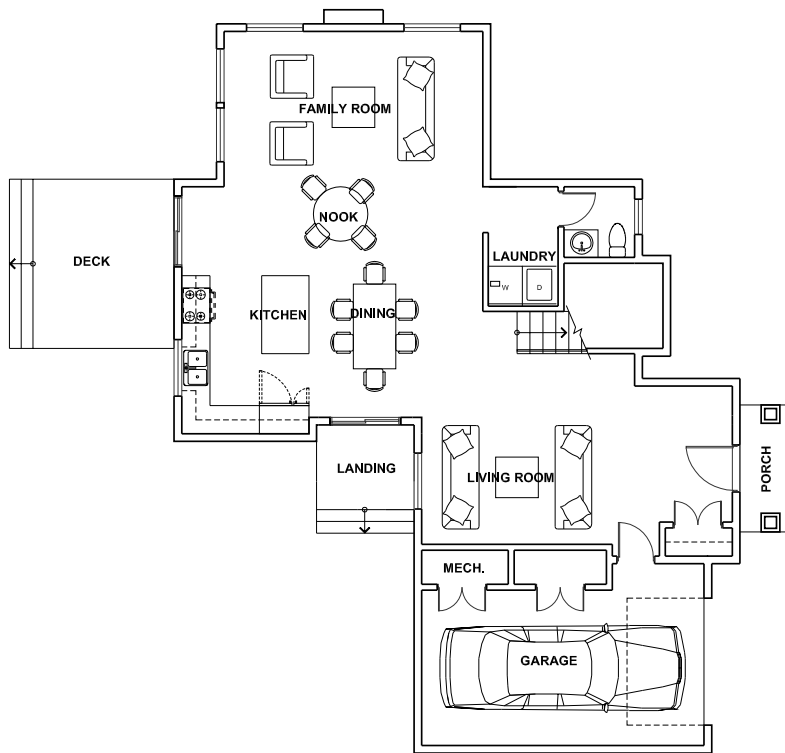
**250.714.2147**  
Email: Info@5160.ca

[www.5160.ca](http://www.5160.ca)

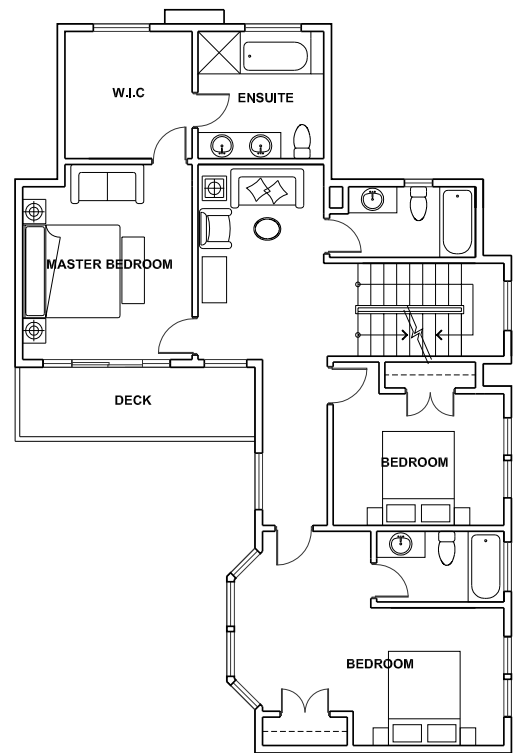


TYPE D (08D) | 3 BEDROOM \*(Please see Roof Plan next page)

TOTAL AREA 2265 sq.ft.



**FIRST FLOOR**  
1079 sq.ft.



**SECOND FLOOR**  
1186 sq.ft.

The Developer reserves the right to make modifications to floor plans, project designs, specifications and features. Floor plans and final home sizes may vary. E. & O. E.

**460** REALTY

**TOM MUNRO**  
Personal Real Estate Corporation



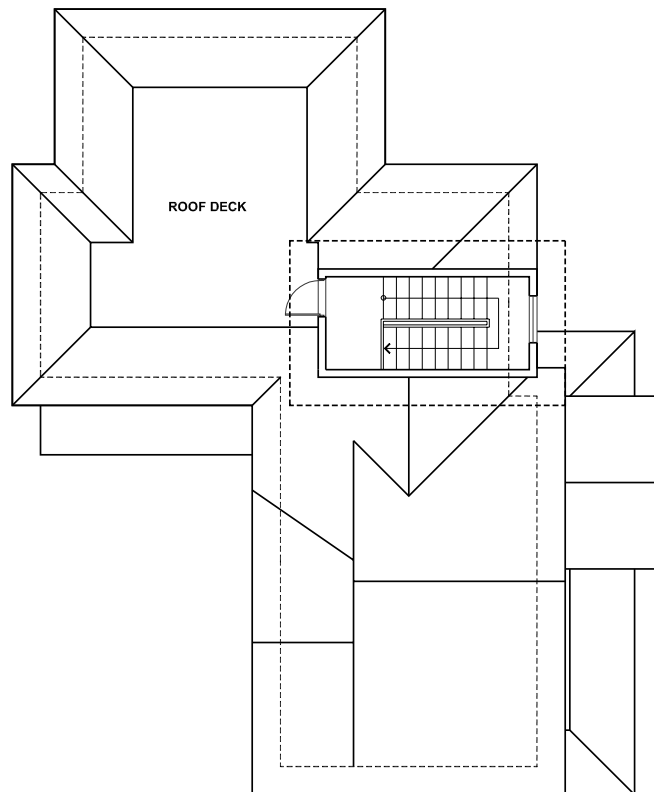
**250.714.2147**  
Email: Info@5160.ca

[www.5160.ca](http://www.5160.ca)



TYPE D (08D) | 3 BEDROOM | ROOF PLAN

TOTAL AREA 2265 sq.ft.



ROOF PLAN

The Developer reserves the right to make modifications to floor plans, project designs, specifications and features. Floor plans and final home sizes may vary. E. & O. E.

**460** REALTY

**TOM MUNRO**  
Personal Real Estate Corporation



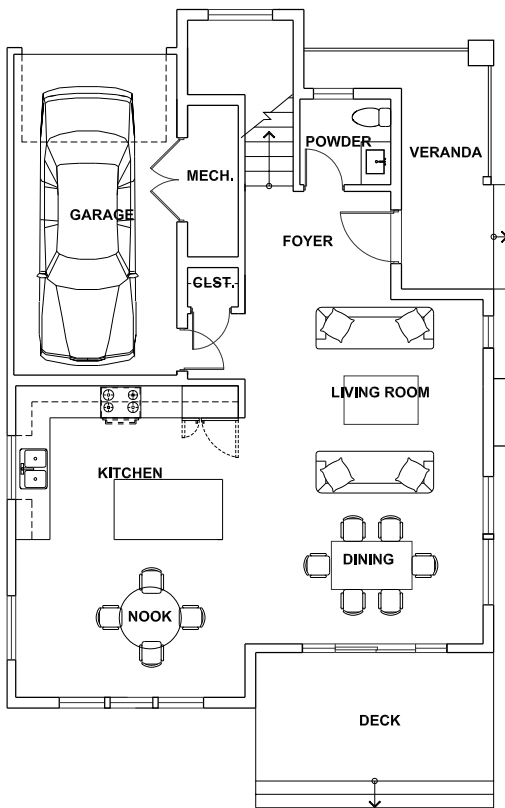
**250.714.2147**  
Email: Info@5160.ca

[www.5160.ca](http://www.5160.ca)

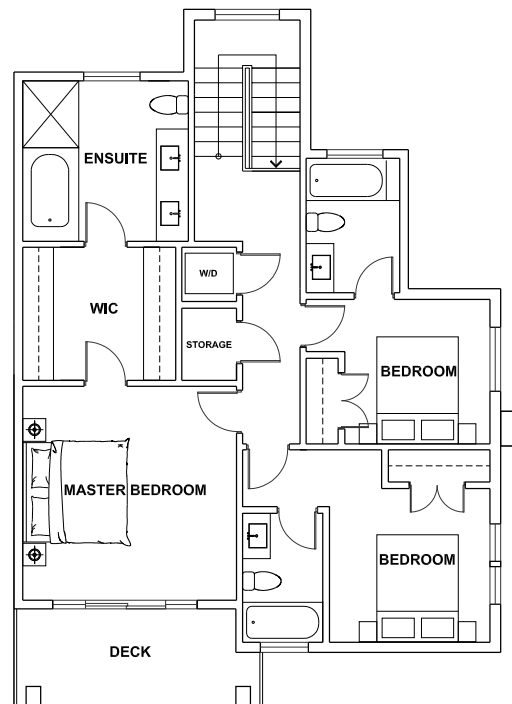


TYPE E (01E) | 3 BEDROOM

TOTAL AREA 1866 sq.ft.



**FIRST FLOOR**  
892 sq.ft.



**SECOND FLOOR**  
974 sq.ft.

The Developer reserves the right to make modifications to floor plans, project designs, specifications and features. Floor plans and final home sizes may vary. E. & O. E.

**460** REALTY

**TOM MUNRO**  
Personal Real Estate Corporation



**250.714.2147**  
Email: Info@5160.ca

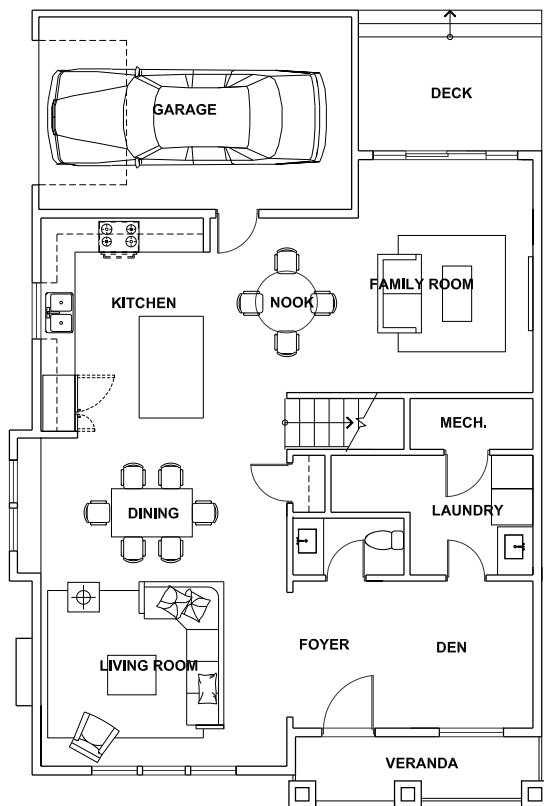
[www.5160.ca](http://www.5160.ca)



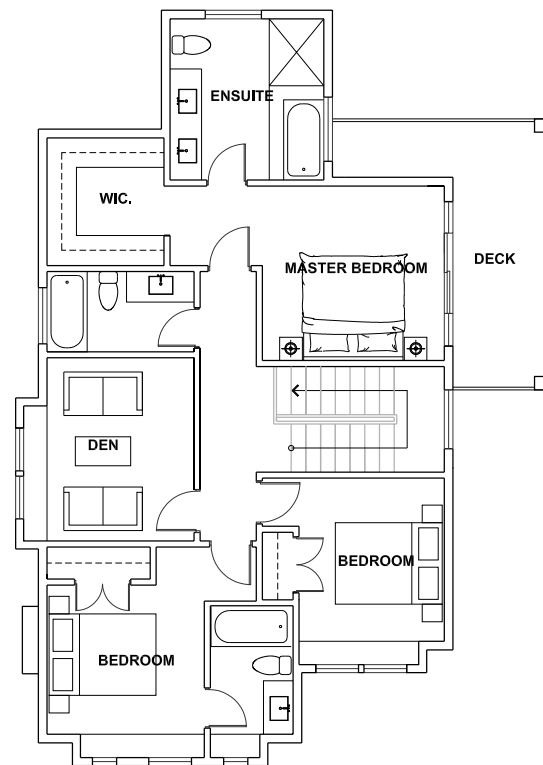


TYPE F (18F) | 3 BEDROOM + DEN

TOTAL AREA 2074 sq.ft.



**FIRST FLOOR**  
1083 sq.ft.



**SECOND FLOOR**  
991 sq.ft.

The Developer reserves the right to make modifications to floor plans, project designs, specifications and features. Floor plans and final home sizes may vary. E. & O. E.

**460** REALTY

**TOM MUNRO**  
Personal Real Estate Corporation



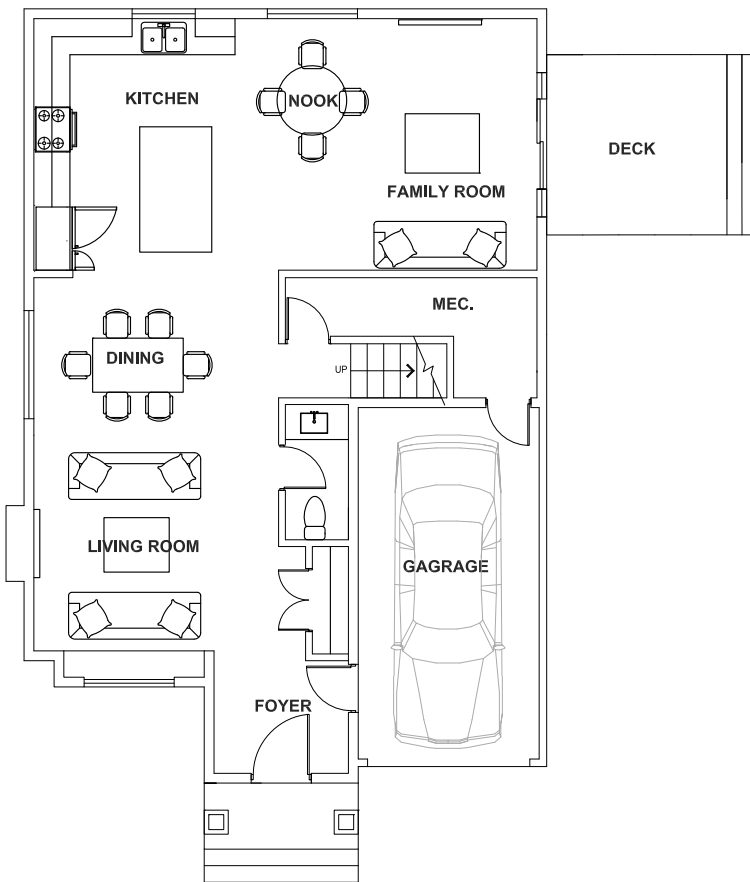
**250.714.2147**  
Email: Info@5160.ca

[www.5160.ca](http://www.5160.ca)

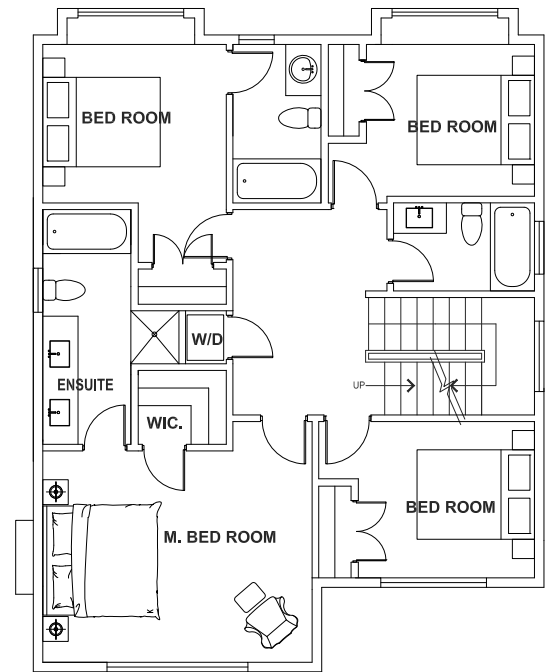


TYPE G (09G, 10G) | 4 BEDROOM \*(Please see Roof Plan next page)

TOTAL AREA 1960 sq.ft.



**FIRST FLOOR**  
972 sq.ft.



**SECOND FLOOR**  
988 sq.ft.

The Developer reserves the right to make modifications to floor plans, project designs, specifications and features. Floor plans and final home sizes may vary. E. & O. E.

**460** REALTY

**TOM MUNRO**  
Personal Real Estate Corporation



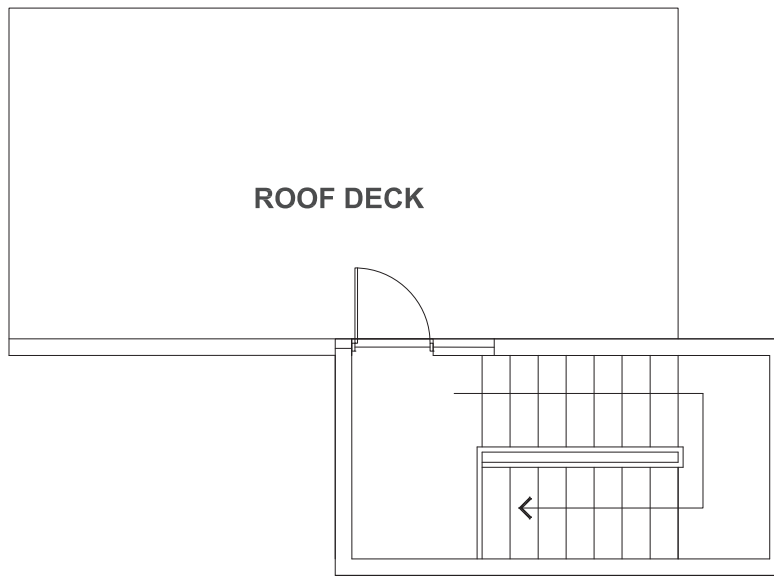
**250.714.2147**  
Email: Info@5160.ca

[www.5160.ca](http://www.5160.ca)



TYPE G (09G, 10G) | 4 BEDROOM | ROOF DECK

**TOTAL AREA** 1960 sq.ft.



**ROOF DECK**  
114 sq.ft.

The Developer reserves the right to make modifications to floor plans, project designs, specifications and features. Floor plans and final home sizes may vary. E. & O. E.

**460** REALTY

**TOM MUNRO**  
Personal Real Estate Corporation

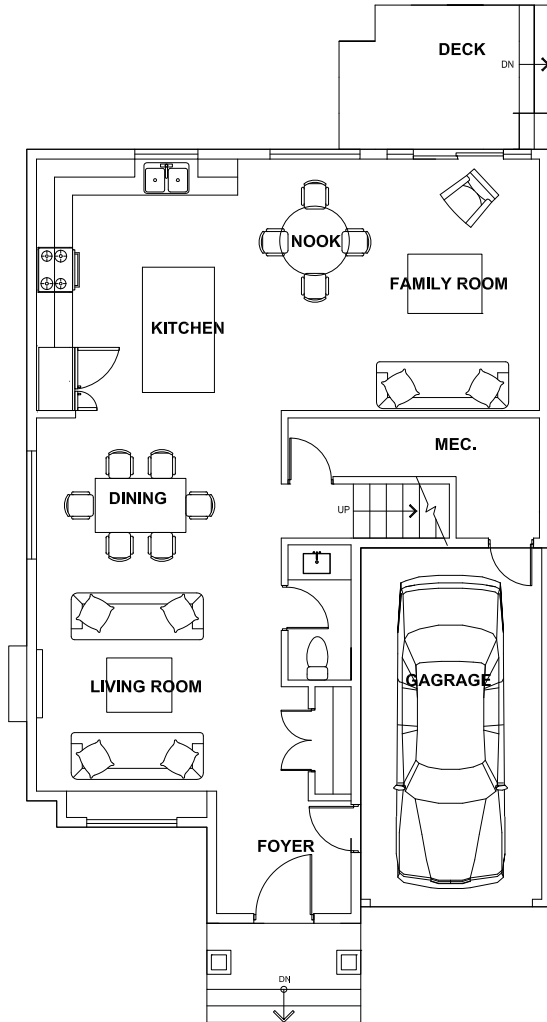


**250.714.2147**  
Email: Info@5160.ca

[www.5160.ca](http://www.5160.ca)

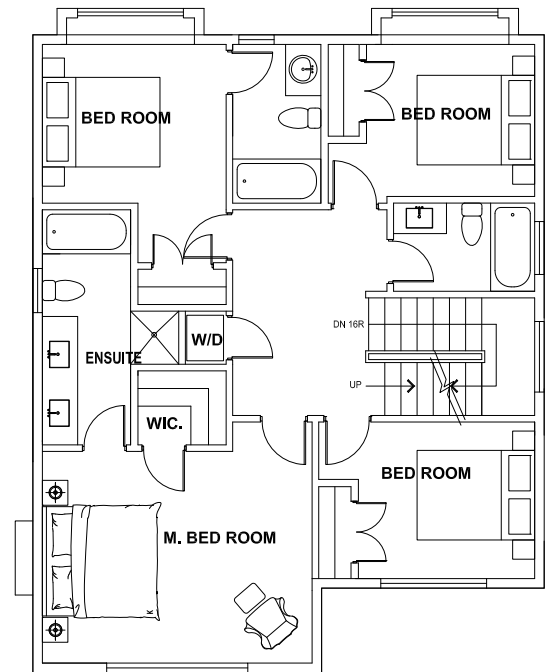


**TYPE G (11G) | 4 BEDROOM** \*(Please see Roof Plan next page)



**FIRST FLOOR**  
972 sq.ft.

**TOTAL AREA** 1960 sq.ft.



**SECOND FLOOR**  
988 sq.ft.

The Developer reserves the right to make modifications to floor plans, project designs, specifications and features. Floor plans and final home sizes may vary. E. & O. E.

**460** REALTY

**TOM MUNRO**  
Personal Real Estate Corporation



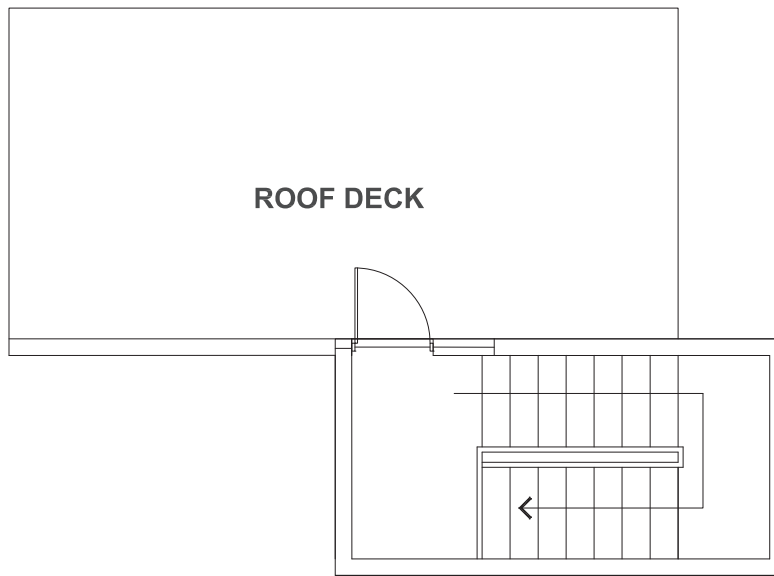
**250.714.2147**  
Email: Info@5160.ca

[www.5160.ca](http://www.5160.ca)



**TYPE G (11G) | 4 BEDROOM | ROOF DECK**

**TOTAL AREA** 1960 sq.ft.



**ROOF DECK**  
114 sq.ft.

The Developer reserves the right to make modifications to floor plans, project designs, specifications and features. Floor plans and final home sizes may vary. E. & O. E.

**460** REALTY

**TOM MUNRO**  
Personal Real Estate Corporation



**250.714.2147**  
Email: Info@5160.ca

**www.5160.ca**



SITE PLAN



The Developer reserves the right to make modifications to floor plans, project designs, specifications and features. Floor plans and final home sizes may vary. E. & O. E.

**460** REALTY

**TOM MUNRO**  
Personal Real Estate Corporation



**250.714.2147**  
Email: Info@5160.ca

[www.5160.ca](http://www.5160.ca)



## FEATURES

### FEATURES

- 18 independent, free-standing town homes ensuring you're not going to have to worry about being attached to someone else
- Open floor plan designs ranging from 1779 sq. ft. to 2265 sq. ft
- Single garages with additional parking on driveway and Visitor Parking
- Roof top patios available on some locations
- Second floor decks on several homes
- Premier North Nanaimo location

### INSPIRED INTERIORS FOR YOU

- Engineered hardwood flooring throughout with tiled bathrooms and quality plush carpet in all bedrooms
- Nine-foot ceilings throughout the main floor
- Gas fireplace with attractive tile surround and wood mantle
- Large walk-in closets in master bedroom offering space saving options, multiple hanging areas, adjustable shelving and drawers
- Premium trim detailing around doors and windows

### GOURMET KITCHENS

- Kitchens feature ceiling height shaker styled doors with crown mouldings, soft close doors and wooden pot and pan drawers

- Kitchens enjoy generous Islands for those who love to spread things out
- All countertops in Quartz for an added touch of richness along with a deep double compartment stainless steel sink.
- An elegant, four-piece Samsung appliance package includes: Fridge, Stove, Dishwasher and Microwave
- Tile back-splashes to the underside of the upper cabinet

### BEAUTIFUL BATHROOMS

- Ensuites feature a large separate tub, a spacious walk-in shower with a rain-forest shower head and a stylish, thick frame-less glass shower door
- Ensuites have high quality Quartz countertops with luxurious Kohler taps, under-mount sinks and a sleek, one-piece modern toilet with soft-close lids
- Additional bathrooms include Quartz countertops, under-mount sinks, soft close toilets, deep tubs with sliding glass doors and tile flooring

### ARCHITECTURAL HIGHLIGHTS

- Hardi Board exteriors providing superior durability and enhanced appearance
- Abundant windows to allow for maximum natural light
- Spacious porch and/or patio that "extends" your living space to the outdoors
- Independent town home living!!

### PEACE OF MIND AND CONVENIENCES

- Single attached garages with additional parking, garage remote and an exterior keypad for easy access
- Natural gas, highly efficient forced air furnace and a large capacity electric Hot Water tank
- Samsung washer and dryer
- Beautifully landscaped with sizable, individual yards
- All operating windows have screens
- Flush mount sprinkler systems
- Hardwired smoke and CO2 detectors
- New Warranty protection provided by Pacific Home Warranty

### STRATA LIVING AND COMMUNITY AMENITIES

- Maintenance free living ensures all landscaping is taken care of
- Strata fees also take care of water and sewer, building insurance as well as a management fee and reserve fund for exterior repairs of common property
- Beautiful landscaping throughout the community
- Minutes away from a variety of shopping, dining, recreational, arts and culture amenities
- Accessible bus transit a few short minutes from your front door

The Developer reserves the right to make modifications to floor plans, project designs, specifications and features. Floor plans and final home sizes may vary. E. & O. E.



**TOM MUNRO**  
Personal Real Estate Corporation



**250.714.2147**  
Email: Info@5160.ca

**www.5160.ca**